

SERIE EUROSTAR 73

CARACTERÍSTICAS:

- Corredera de corte recto.

SECCIÓN

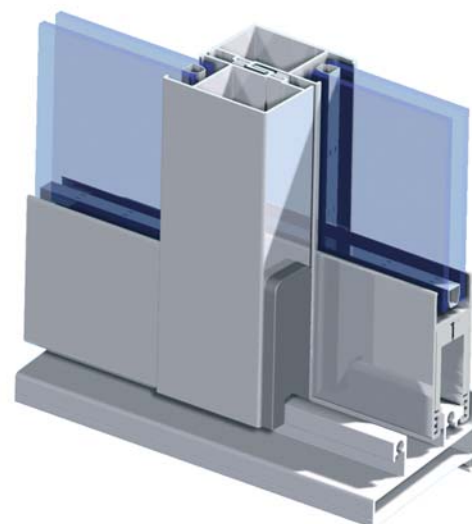
- Cerco: 73 mm.
- Hoja: 29,5 mm.
- Acristalamiento Máximo: 19 mm.

CLASIFICACIÓN DE ENSAYO:

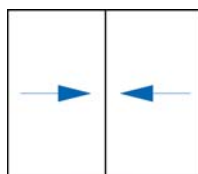
- Permeabilidad al aire: CLASE 3
- Estanqueidad al agua: CLASE 6A
- Resistencia al viento: CLASE C5

ACABADOS:

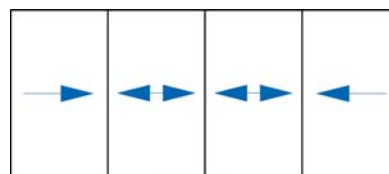
- Anodizado.
- Lacado Color.
- Lacado imitación madera.
- Efecta Madera.



POSIBILIDADES DE APERTURA:

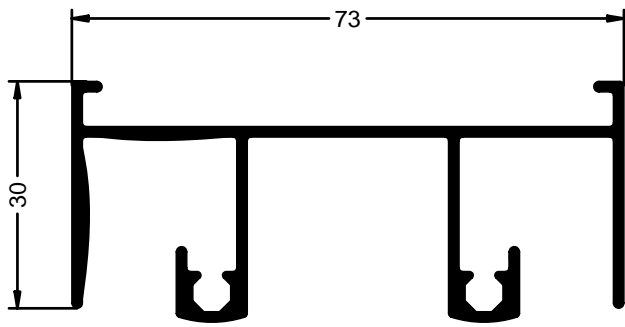


CORREDERA
2 HOJAS



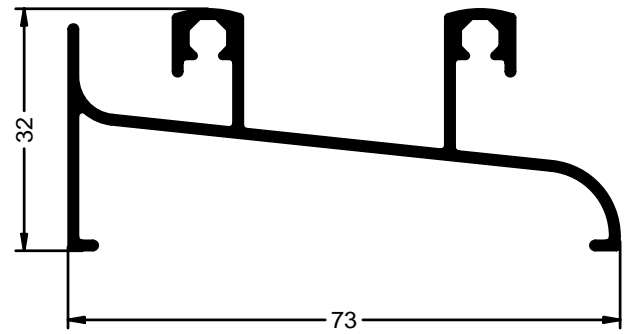
CORREDERA
4 HOJAS

Serie EUROSTAR 73



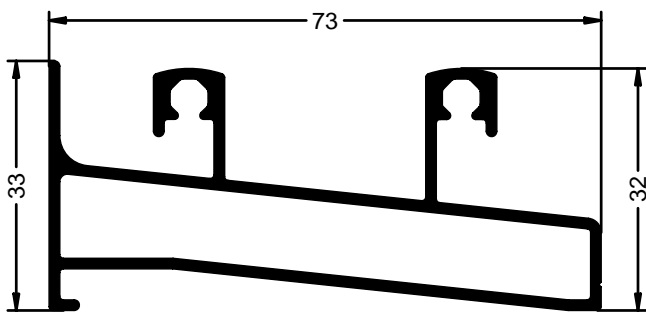
CERCO SUPERIOR

Ref: 6100



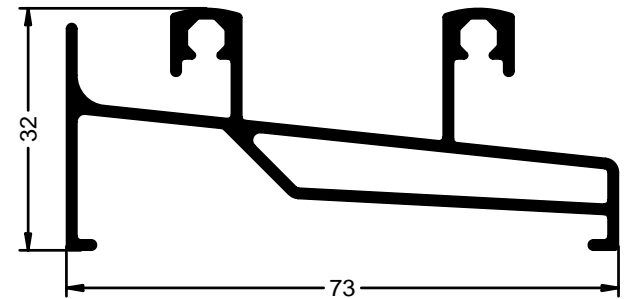
CERCO INFERIOR

Ref: 6101



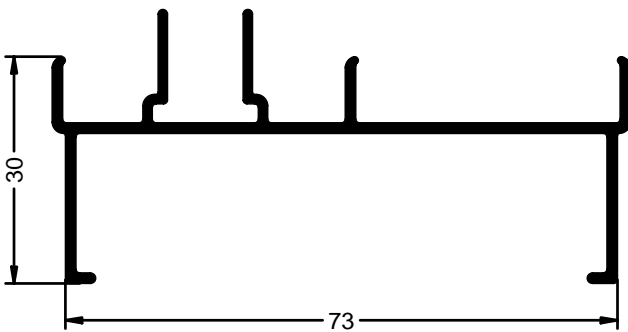
CERCO INFERIOR TUBULAR

Ref: 6118



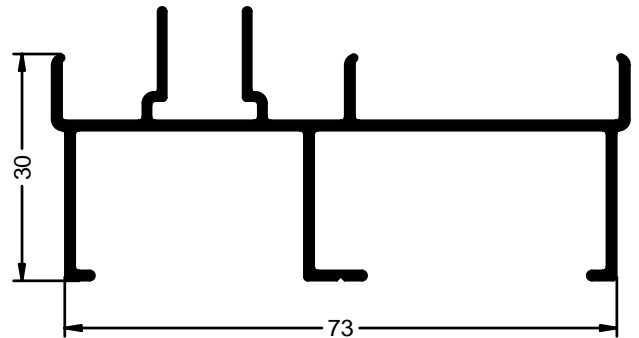
CERCO INFERIOR TUBULAR

Ref: 6095



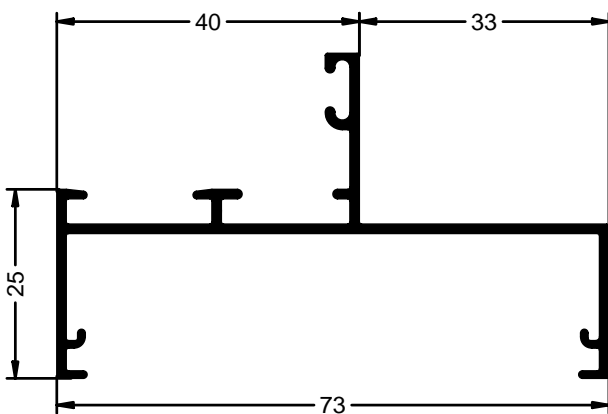
CERCO LATERAL

Ref: 6102



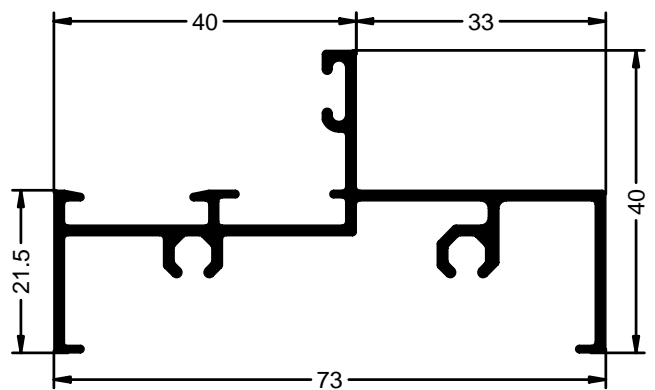
CERCO LATERAL

Ref: 6102A



CERCO FIJO

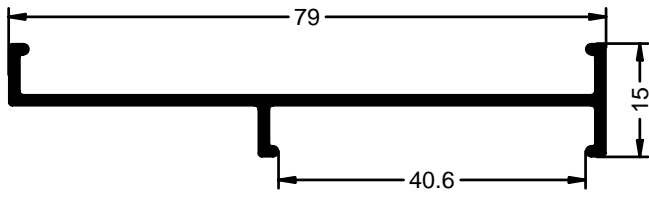
Ref: 6116



CERCO FIJO

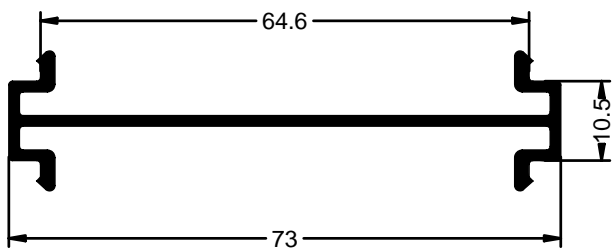
Ref: 6096

Serie EUROSTAR 73



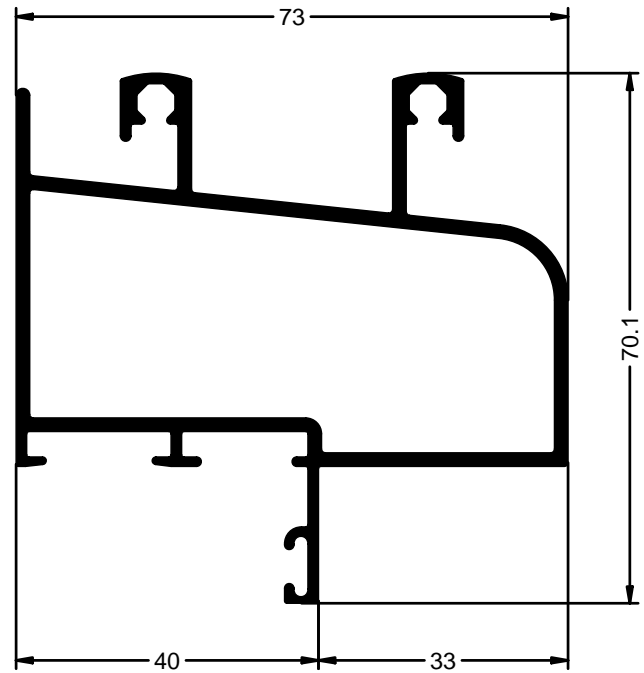
UNION DE CERCO 73 Y PRACTICABLE 40

Ref: 6128



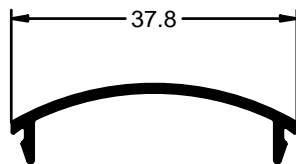
UNIÓN DE CERCOS

Ref: 6115



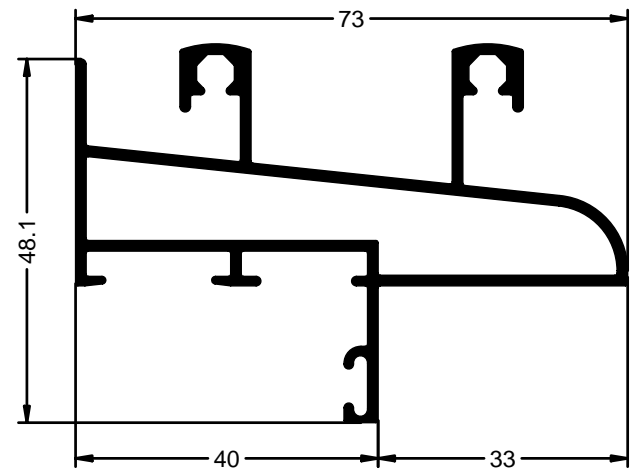
CERCO INFERIOR CON FIJO GRANDE

Ref: 6049



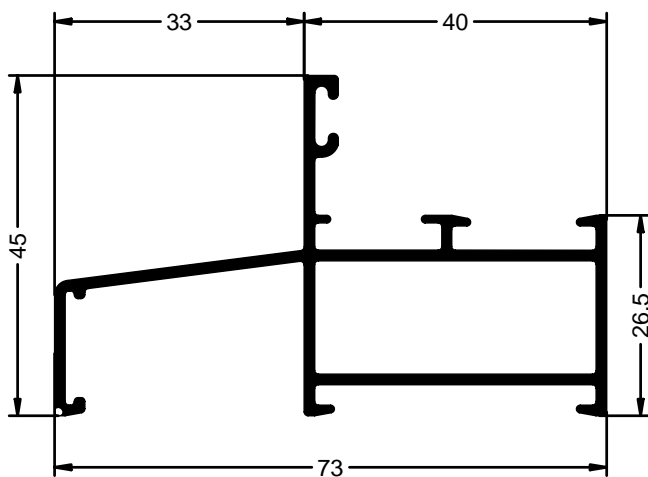
EMBELLECEDOR CERCO LATERAL

Ref: 6107



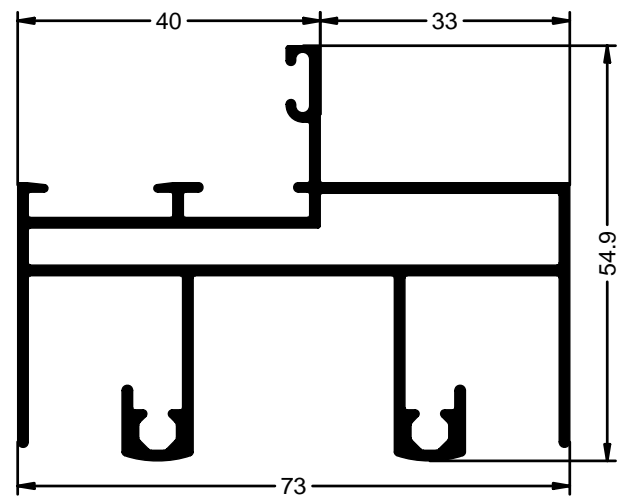
CERCO INFERIOR FIJO

Ref: 6097



CERCO FIJO

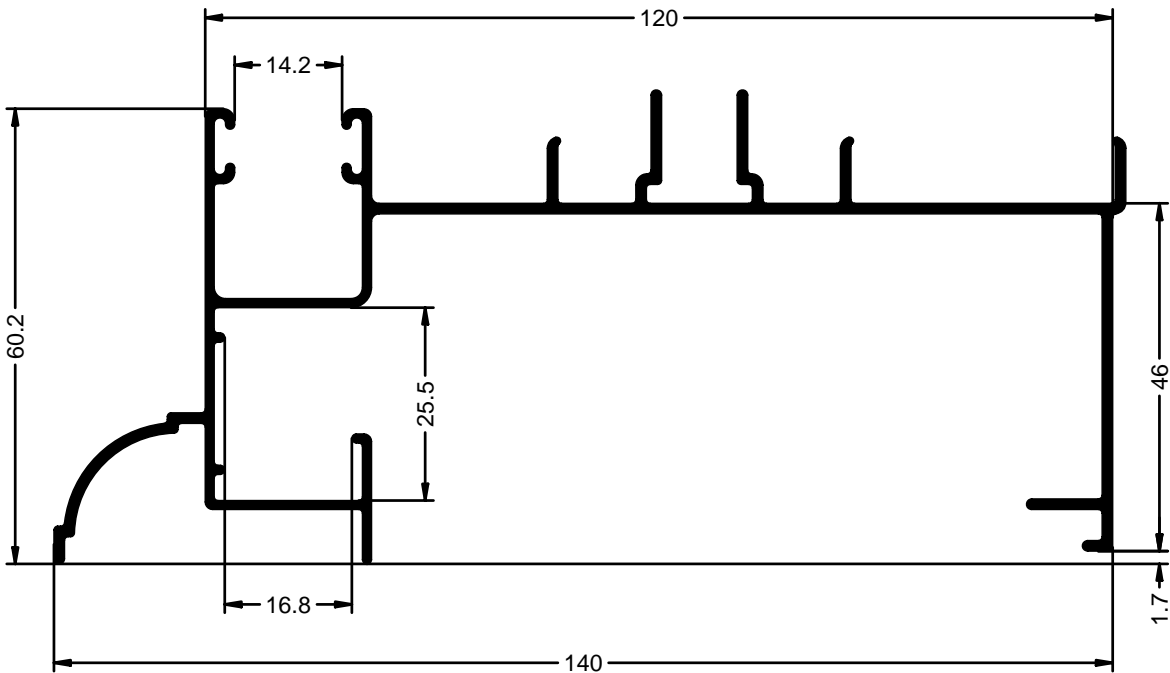
Ref: 6098



CERCO SUPERIOR FIJO INC.

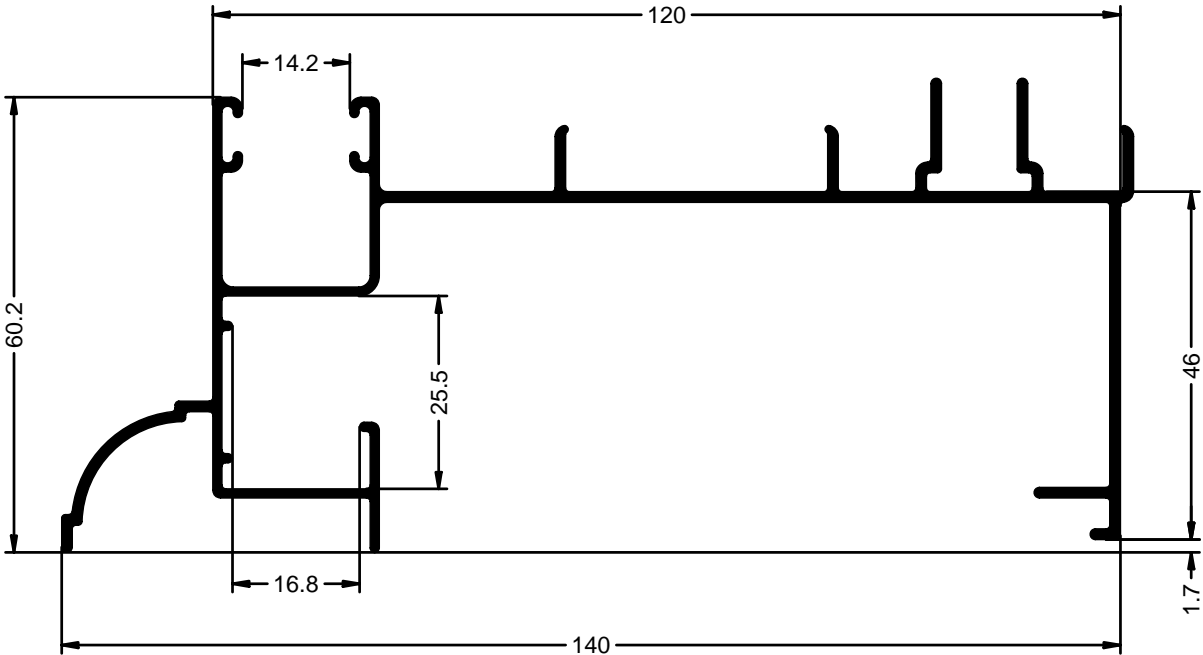
Ref: 6099

Serie EUROSTAR 73



CERCO LATERAL IZOD. CAJÓN MONOBLOCK

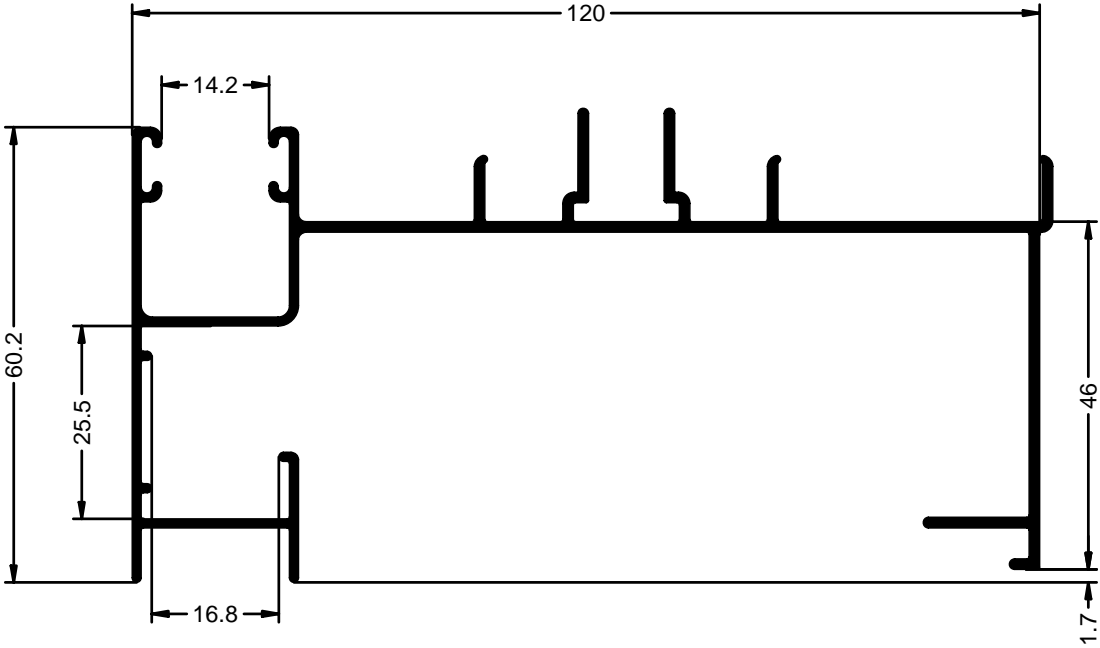
Ref: 6112



CERCO LATERAL DCHO. CAJÓN MONOBLOCK

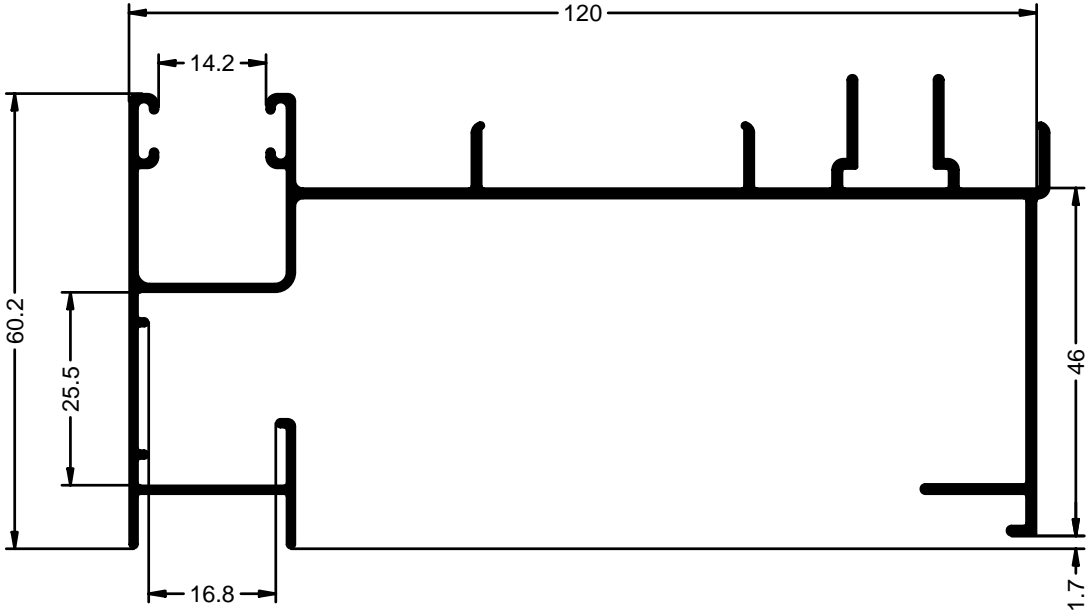
Ref: 6113

Serie EUROSTAR 73



CERCO LATERAL IZOD. CAJÓN MONOBLOCK

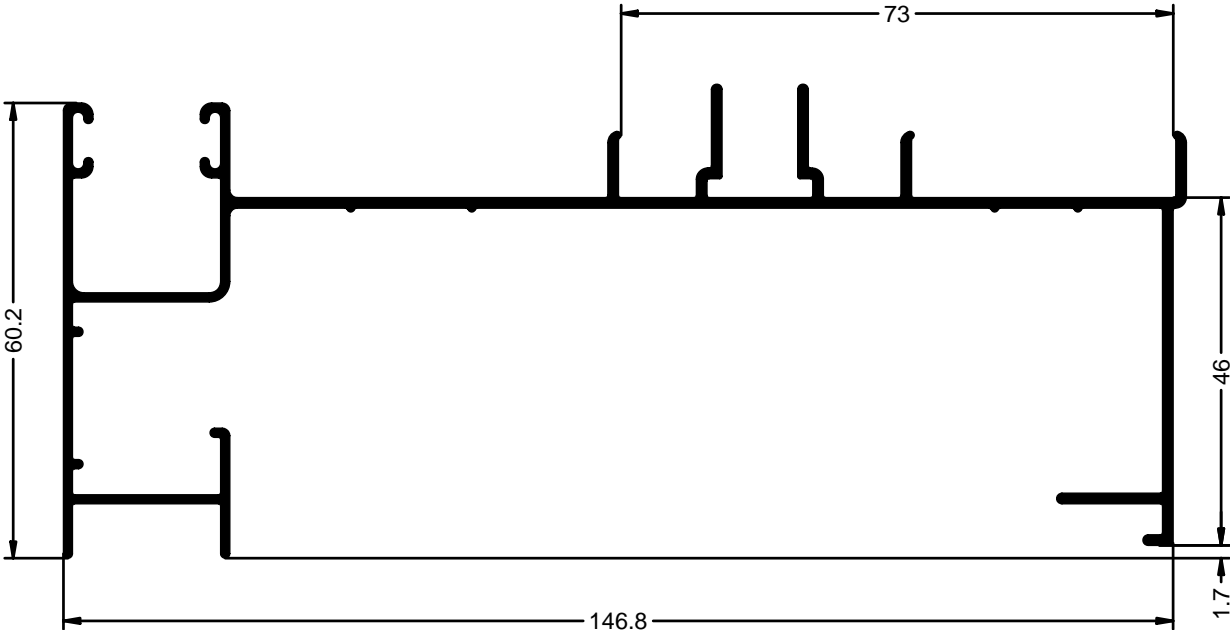
Ref: 6123



CERCO LATERAL DCHO. CAJÓN MONOBLOCK

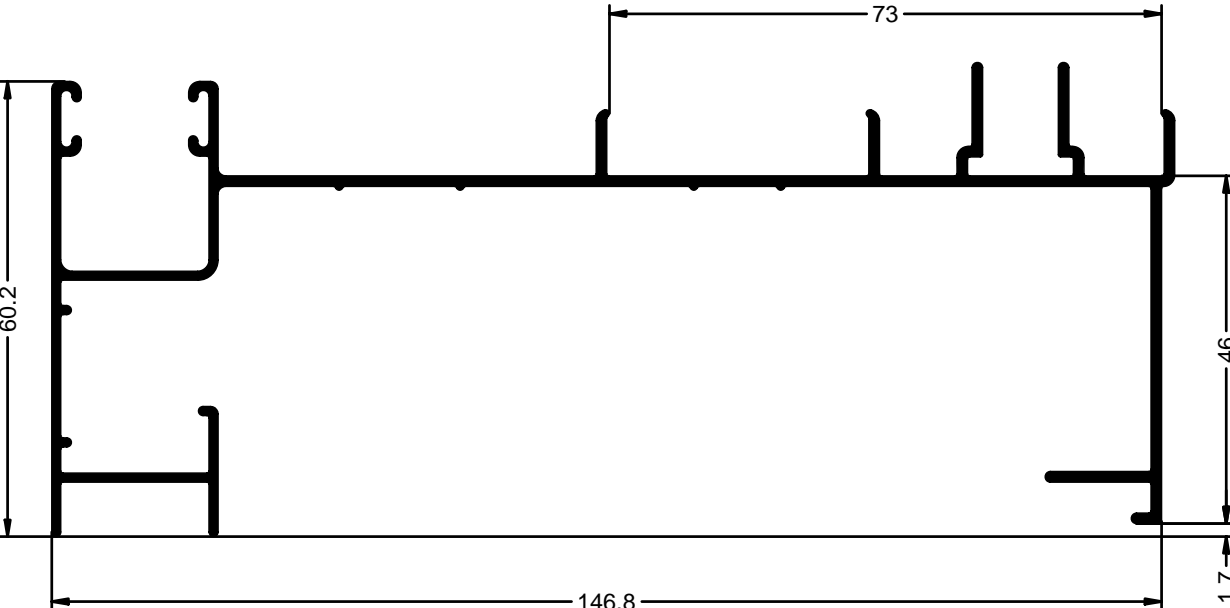
Ref: 6124

Serie EUROSTAR 73



CERCO LATERAL IZOD. CAJÓN MONOBLOCK

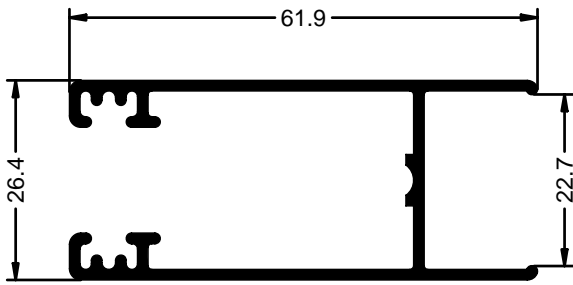
Ref: 6138



CERCO LATERAL DCHO. CAJÓN MONOBLOCK

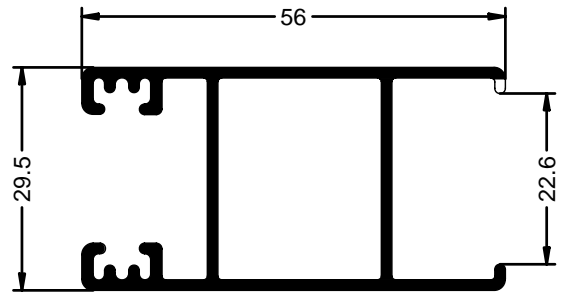
Ref: 6137

Serie EUROSTAR 73



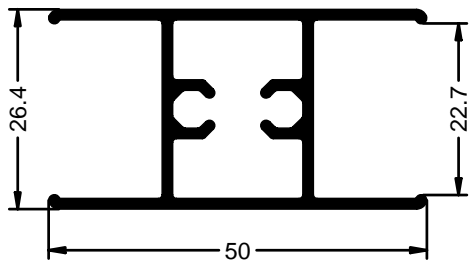
HOJA DE RUEDAS CLIMALIT

Ref: 6103



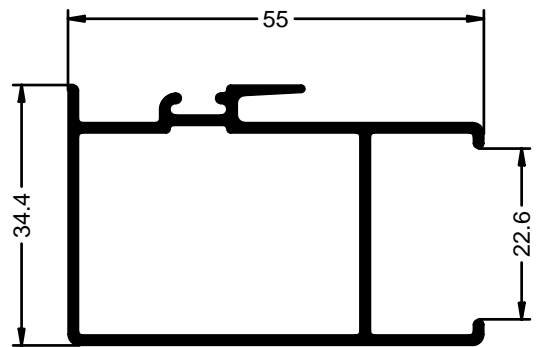
HOJA LATERAL CLIMALIT

Ref: 6104



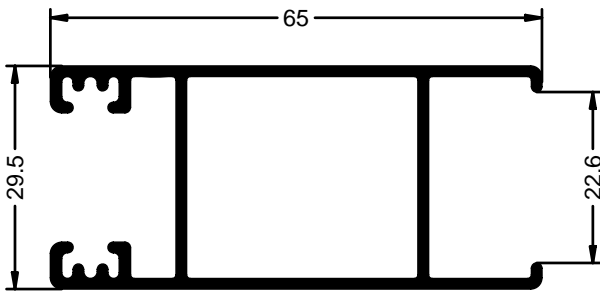
PARTELUNAS

Ref: 6114



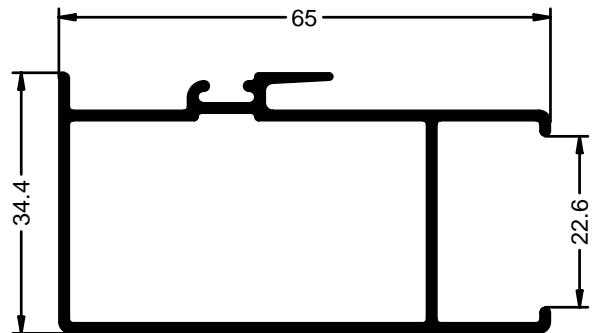
HOJA CENTRAL CLIMALIT

Ref: 6105



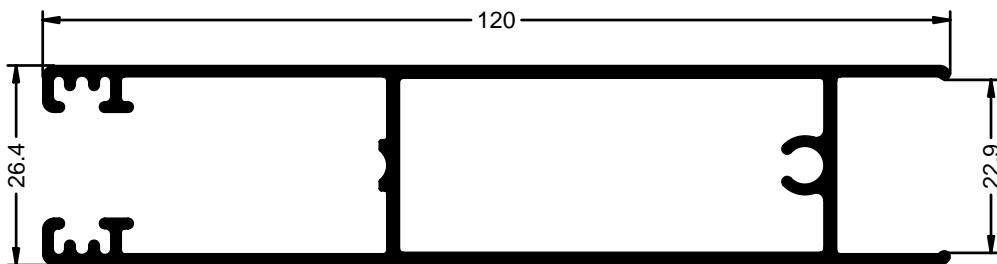
HOJA DE RUEDAS CLIMALIT

Ref: 6135



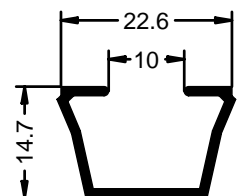
HOJA CENTRAL CLIMALIT

Ref: 6136



ZÓCALO DE RUEDAS

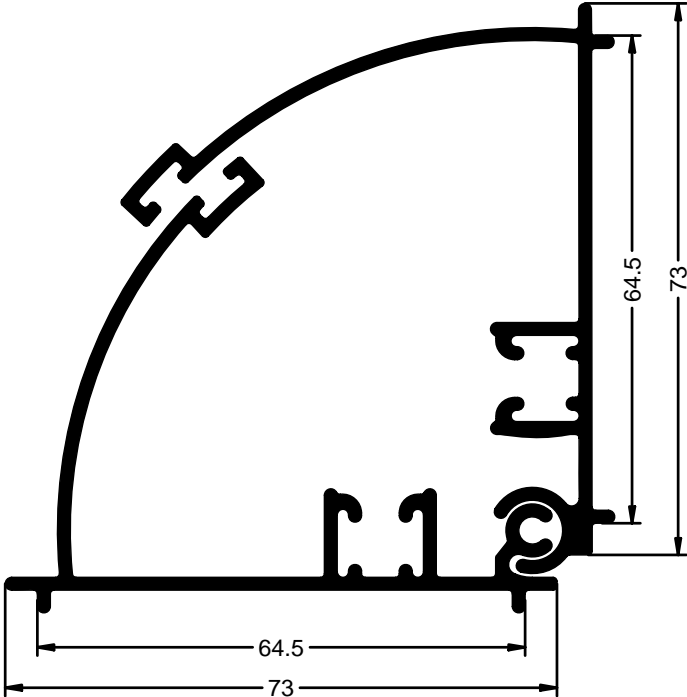
Ref: 6111



COMPL. CRISTAL MONOLIT.

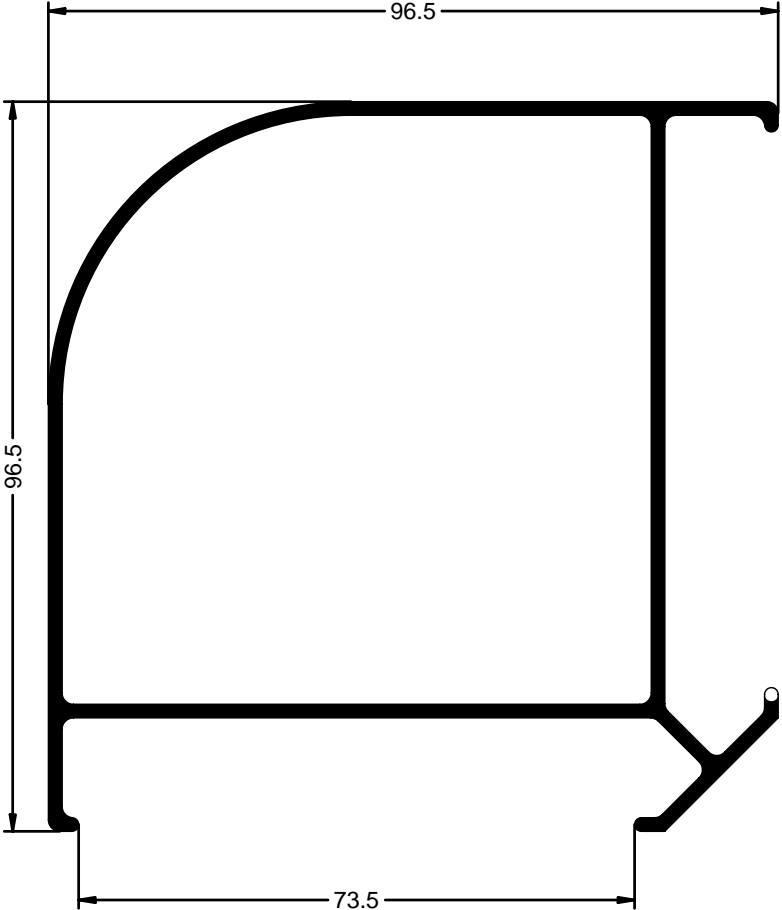
Ref: 6106

Serie EUROSTAR 73



ESQUINERO GRADUABLE

Ref: 6005



ESQUINERO

Ref: 4515

Serie EUROSTAR 73



			
Cierre pulsador con cerradura Ref.-0111	Nudo solape 6085 Ref.-0233	Embellecedor junquillo S/ Euro Ref.-0281	Valvula desague corredera 100 UD. Ref.-0282
			
Felpudo 7X7 Film-Seal 100 mtr. Ref.-0402	Goma cuña grande 100 mtr. Ref.-0412	Goma acristalar ext. S/ Euro 100 mtr. Ref.-0450	Goma cuña pequeña 100 mtr. Ref.-0466
			
Asa tirador S/ Euro-Plus Ref.-0663	Cortavientos superior Star 60/73 Ref.-0694	Escuadra solape Ref.-0698	Grapa junquillo redondo 100 und. Ref.-0708
			
Carcasa Star 73 superior regulable Ref.-0727	Carcasa Star 73 inferior regulable Ref.-0728	Remates embellecedor Star 73 Ref.-0729	Cortavientos inferior Star 73 Ref.-0730
			
Juntas cerco Star 73 Ref.-0731	Rodamiento Star 73 Ref.-0732	Kit 2 Hojas Star 73 rueda regulable Ref.-0733	Kit 15 Ventanas Star 73 rueda regulable Ref.-0735

Serie EUROSTAR 73



Kit 2 Hojas Star 73 rueda fija Ref.-0745	Kit 15 Ventanas Star 73 rueda fija Ref.-0746	Tapeta Star 73 Ref.-0748	Escuadra fijos Star 73 Ref.-0752
Cierre aluminio Star 73 balancin Ref.-0753	Carcasa superior fija Star 73 Ref.-0756	Carcasa inferior fija Star 73 Ref.-0757	Cierre aluminio Star 73 muelle Ref.-0780
Kit 2 hojas Star 73 Ru/Re cierre muelle Ref.-0781	Kit 15 ventanas Star 73 Ru/Re cierre muelle Ref.-0783	Kit 2 hojas Star 73 Ru/Fi cierre muelle Ref.-0784	Kit 15 ventanas Star 73 Ru/Fi cierre muelle Ref.-0786
Util Star 73 Ref.-1052	Util compacto Star 73 Ref.-1053	Util cierre embutido Star 73 Ref.-1055	Util cierres Star 60-73 Ref.-1091

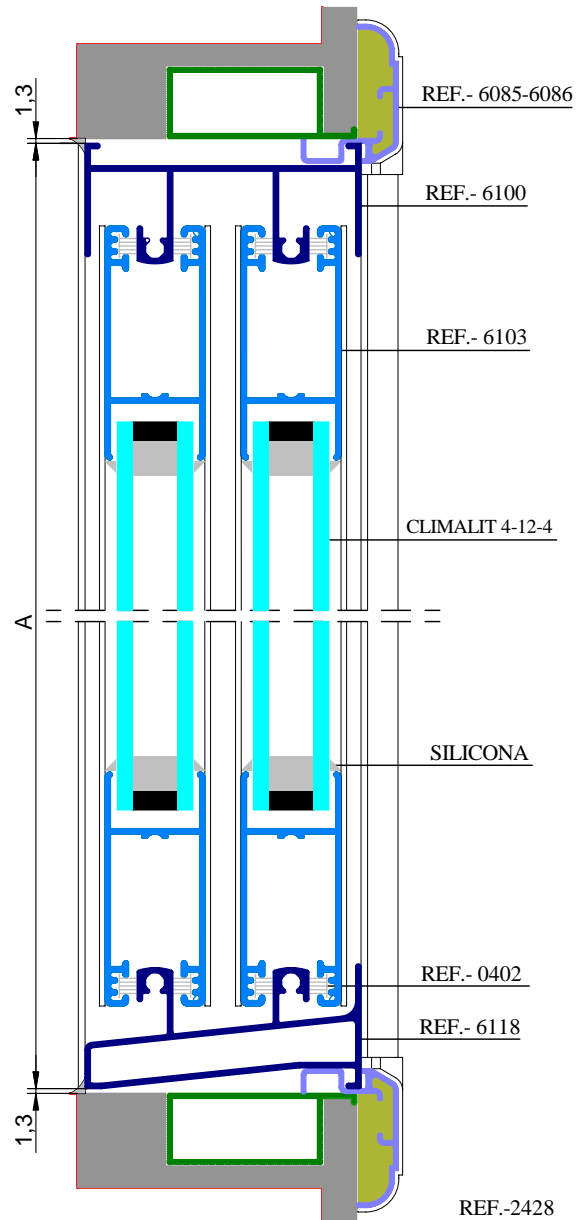
Serie EUROSTAR 73



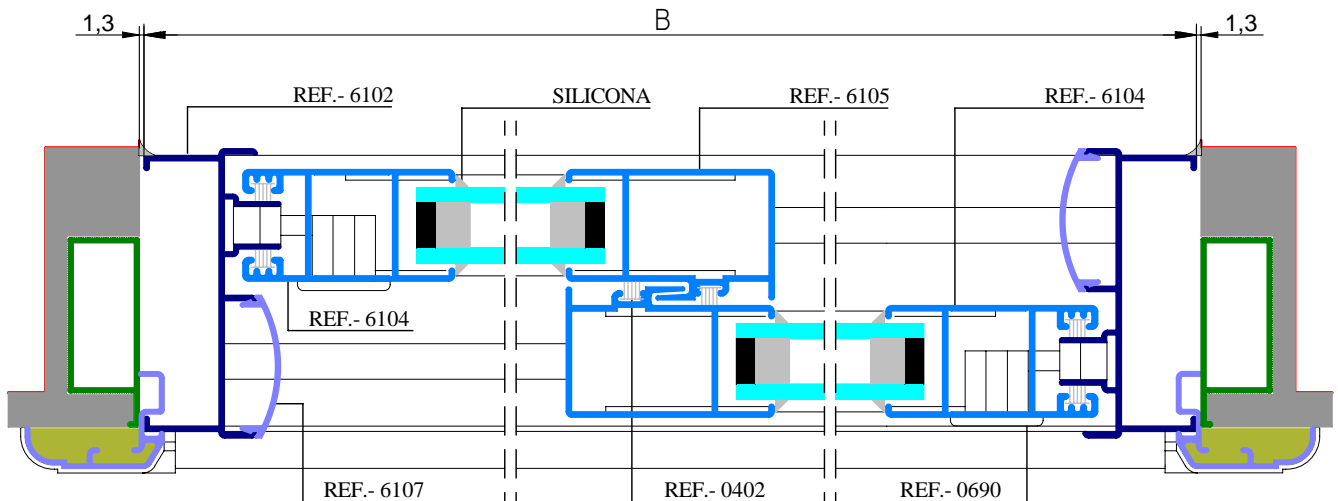
VENTANA CORREDERA 2 HOJAS

CONCEPTO	REF.	CORTE	SIMBOLO	Ud.	MEDIDAS
CERCO SUPERIOR	6100	90°		1	=B-43
CERCO INFERIOR TUBULAR	6118	90°		1	=B-43
CERCO LATERAL	6102	90°		2	=A
HOJA DE RUEDAS	6103	90°		4	$= (B-73)/2$
HOJA LATERAL	6104	90°		2	=A-46
HOJA CENTRAL	6105	90°		2	=A-46
TAPETA CERCO LATERAL	6107	90°		2	=A-88
SOLAPE 30mm VER	6085	90°		2	=A-12
SOLAPE 30mm HOR	6085	90°		2	=B-12
FELPUDO FILM-SEAL 7x7 mm.	0402	90°		6	=A-46
				8	$= (B-73)/2$
CLIMALIT 4 - 12 - 4		90°		2	$= A-148$ $= (B-180)/2$
NUDO SOLAPE 6085	0233			4	
KIT 2 HOJAS RUEDA REGULABLE	0733			1	

AVISO: Las medidas de este cuadro son orientativas



SECCION VERTICAL



SECCION HORIZONTAL

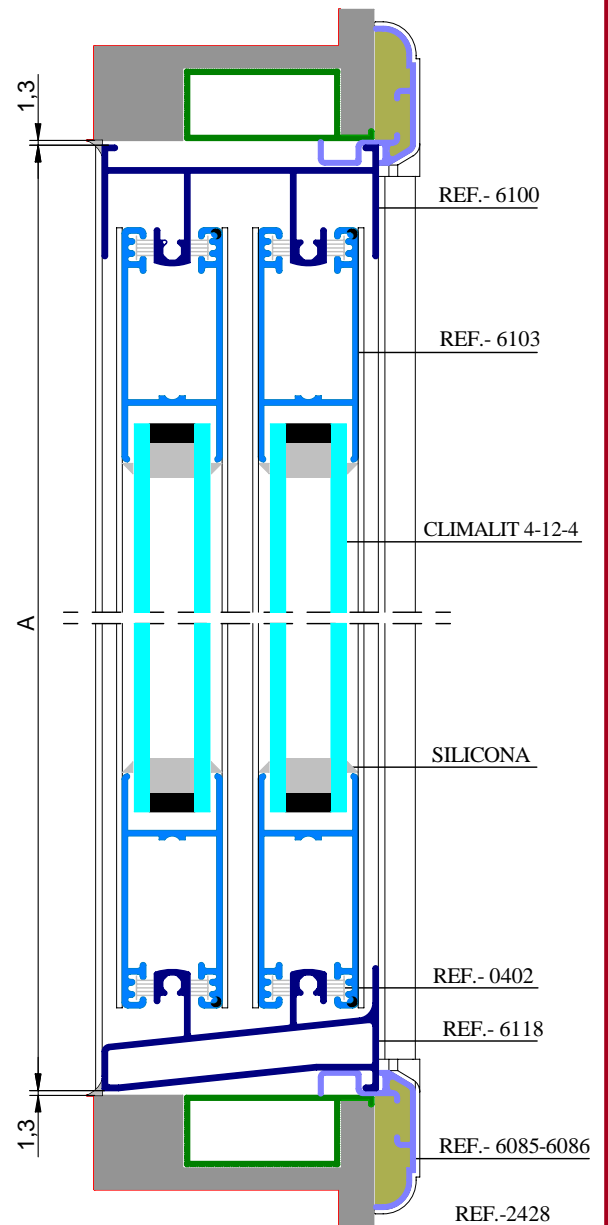
Serie EUROSTAR 73



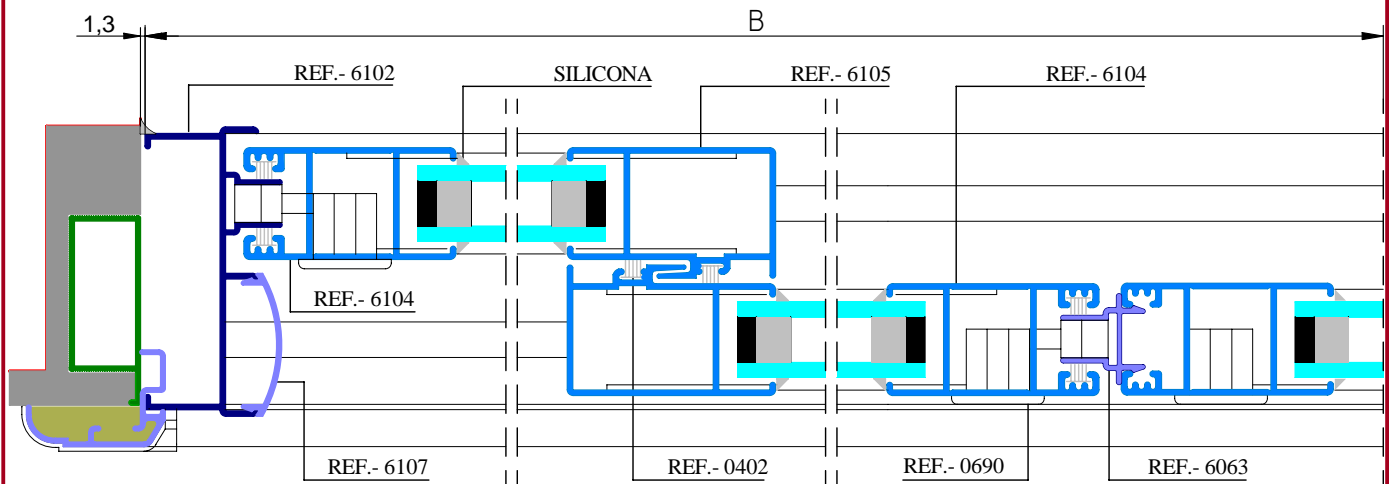
VENTANA CORREDERA 4 HOJAS

CONCEPTO	REF.	CORTE	SIMBOLO	Ud.	MEDIDAS
CERCO SUPERIOR	6100	90°		1	=B-43
CERCO INFERIOR TUBULAR	6118	90°		1	=B-43
CERCO LATERAL	6102	90°		2	=A
HOJA DE RUEDAS	6103	90°		8	=(B-92)/4
HOJA LATERAL	6104	90°		4	=A-46
HOJA CENTRAL	6105	90°		4	=A-46
TAPETA CERCO LATERAL	6107	90°		2	=A-83
SOLAPE 30mm VER	6085	90°		2	=A-12
SOLAPE 30mm HOR	6085	90°		2	=B-12
FELPUDO FILM-SEAL 7x7 mm.	0402	90°		10	=A-46
				16	=(B-92)/4
COMPLEMENTO 4 HOJAS	6063	90°		1	=A-46
CLIMALIT 4 -12 - 4		90°		4	=A-148 =(B-312)/4
NUDO SOLAPE 6085	0233			4	
KIT 2 HOJAS RUEDA REGULABLE	0733			2	

AVISO: Las medidas de este cuadro son orientativas



SECCION VERTICAL



SECCION HORIZONTAL

